

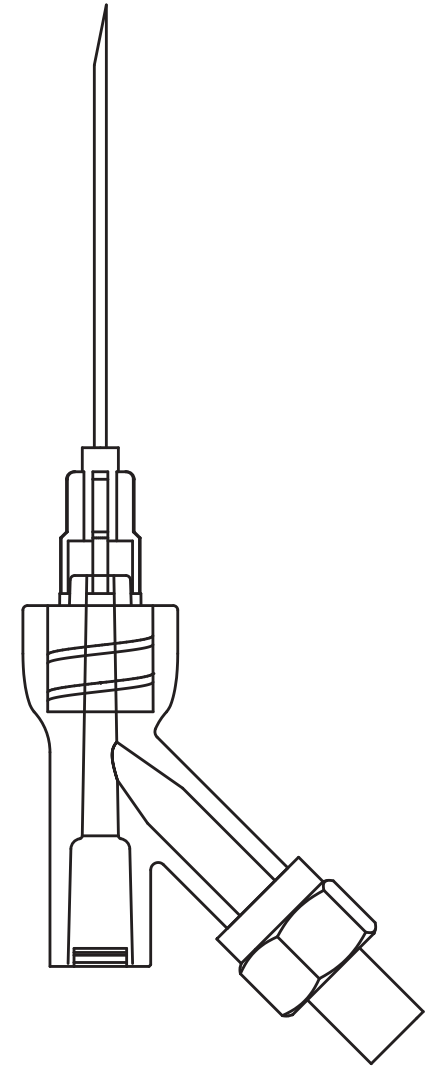
Light Guided Drug Injection System

LightinTM

solmedix,

www.solmedix.com

*"Lightin provides a solution
for precise injection on the intended location"*



Solmedix Co.,Ltd.
Solution of Medical Device for Innovative ExitTM

Lightin™ Light Guided Drug Injection

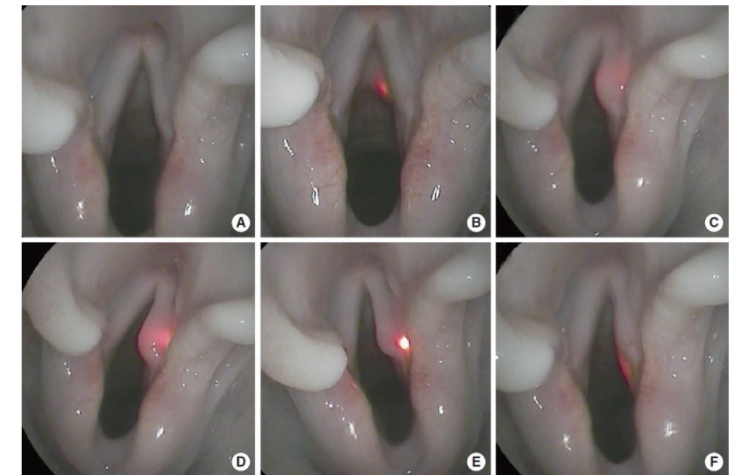
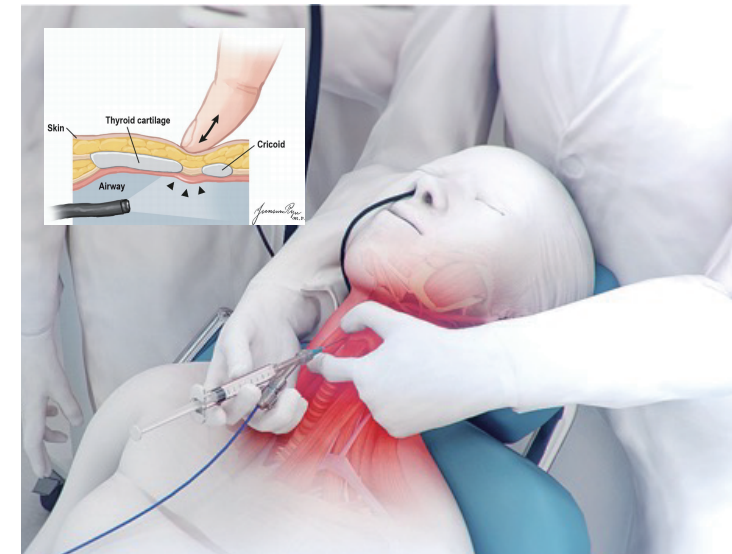
Lightin™ Benefits

Lightin provides a solution for precise drug injection on the intended location

Percutaneous injection is one of injection laryngoplasty approaches, which are injected using a needle through the skin of the neck. It is simpler and less painful than oral injection but requires a highly experienced operator, as the injection area can be difficult to locate.

- Less chance of bleeding and spasm
- Suitable for office-based procedure
- Avoidance of mis-injections
- Targeting various small mucosal lesion easily
- Short procedure time of VFI (Vocal Fold Injection)
- Guidance for the needle in the difficult cases of re-injection or disturbed anatomy (e.g. thyroidectomy)

The lighted needle is introduced into patient vocal folds via a submucosal pathway. The red light at the needle tip could be seen in the vocal folds without difficulty.



Ref. : Real-Time Light-Guided Vocal Fold Injection: An In Vivo Feasibility Study in a Canine Model, *Clinical and Experimental Otorhinolaryngology* 2021; 14(3): 338-346.

Lightin™ Light Guided Drug Injection

Lightin™ Features

Real-time light-guided vocal fold injection might be a feasible and promising technique for treatment of vocal fold pathology.



Lightin™ Cath and Lightin™ Generator



Lightin™ Cath 23G



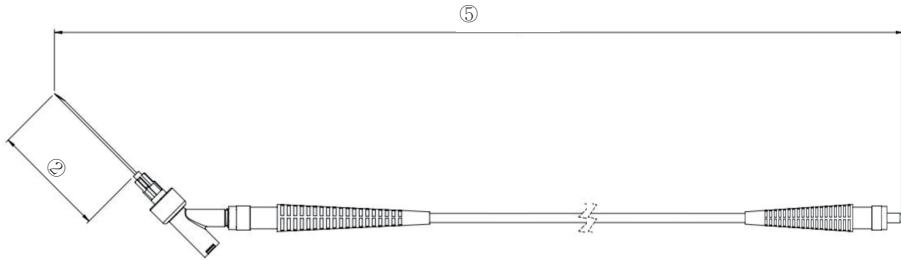
Lightin™ Cath 25G



Lightin™ Extension Cable

Lightin™ Function & Spec.

A single optic fiber was inserted in a needle. A led light module is used as the light source. The needle tip is accurately localized, and the depth from the mucosa could be estimated by the brightness and size of the redlight spot.



Lightin™Cath

(Unit : mm)

MODEL	Needle			Optic Fiber			
	① Outer Diameter	② Length	③ Size	④ Outer Diameter	⑤ Length		
LI-23G - 20	0.600~0.673	37	23G	0.125	200		
LI-23G - 50					500		
LI-23G - 150					1500		
LI-25G - 20	0.500~0.530		25G		200		
LI-25G - 50					500		
LI-25G - 150					1500		



solmedix

#702/703/706, 330 Seongam-ro, Mapo-gu, Seoul,
03920, Rep. of Korea

T/+82-2-717-7852
M/+82-10-8391-3491
E/support@solmedix.com

www.solmedix.com



Distributor

Rev. A11.22

Lightin™ Ordering Information

Product	Spec.	Ref. Number	Qty.
Lightin™ Cath	Needle: 23G × 38mm Fiber length: 200mm	LI-23G-20	10 EA / BOX
	Needle: 23G × 38mm Fiber length: 500mm	LI-23G-50	10 EA / BOX
	Needle: 23G × 38mm Fiber length: 1500mm	LI-23G-150	10 EA / BOX
	Needle: 25G × 38mm Fiber length: 200mm	LI-25G-20	10 EA / BOX
	Needle: 25G × 38mm Fiber length: 500mm	LI-25G-50	10 EA / BOX
	Needle: 25G × 38mm Fiber length: 1500mm	LI-23G-150	10 EA / BOX
Lightin™ Generator	13.2 mW / 625nm	LIG-LD-625	1 EA

This device has to be used by on the order of a physician. The Lightin™ is registered trade mark of Solmedix Co., Ltd.
The Lightin™ devices are classified by the KFDA.(제신 19-669호, 제인 20-4031호)
© Solmedix Co., Ltd.